



- Blocking/Filtering**
 - ▶ Services Blocking
 - ▶ Website Blocking
 - ▶ Scheduling Access
- IP Address**
 - ▶ WAN IP Addressing
 - ▶ IPv6 WAN Settings
 - ▶ LAN IP Settings
 - ▶ IPv6 LAN Settings
 - ▶ DHCP Reservation
 - ▶ Dynamic DNS
 - ▶ DNS Host Mapping
 - ▶ Port Bridging
- HPNA LAN**
- Security**
 - ▶ Admin Password
- Storage Service**
 - ▶ Storage Device Info
 - ▶ Samba Configuration
- Modem Utilities**
 - ▶ Reboot
 - ▶ Restore Defaults

Storage Service

The Storage service allows storage devices connected to the modem to be more easily accessed.

Volumename	FileSystem	Total Space	Used Space
usb1_1	vfat	15279	2761

Go to Advanced Setup > Storage Device Info.
You should see the connected USB drive details as per example above.





- Blocking/Filtering**
 - Services Blocking
 - Website Blocking
 - Scheduling Access
- IP Address**
 - WAN IP Addressing
 - IPv6 WAN Settings
 - LAN IP Settings
 - IPv6 LAN Settings
 - DHCP Reservation
 - Dynamic DNS
 - DNS Host Mapping
 - Port Bridging
- HPNA LAN**
- Security**
 - Admin Password
- Storage Service**
 - Storage Device Info
 - Samba Configuration**
- Modem Utilities**
 - Reboot
 - Restore Defaults

Samba Configuration

File Sharing: Enable Disable

Samba Username:

Samba Password:

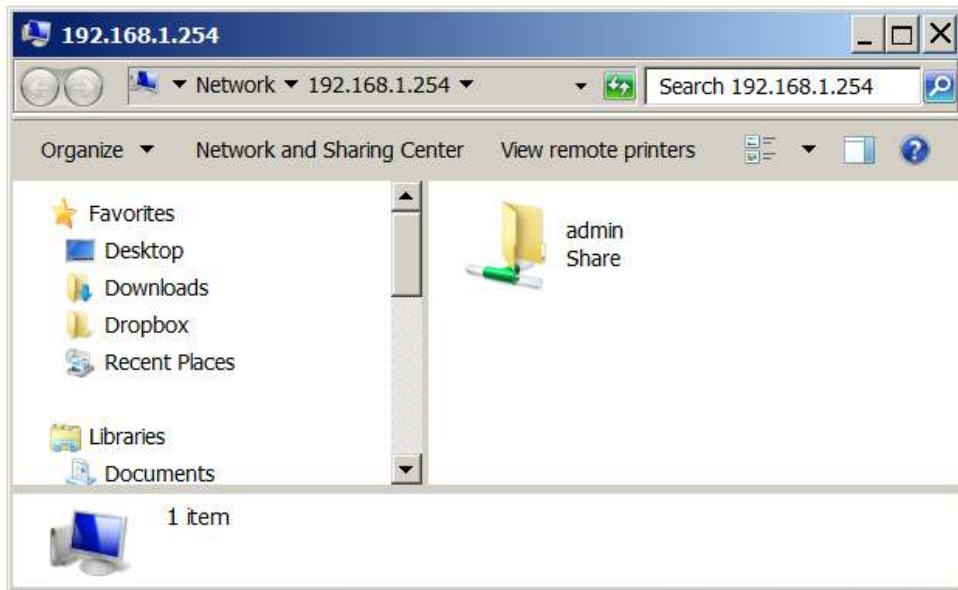
Device Name: ▼

Workgroup:

Click on "Samba Configuration". Click on "Enable, enter Username "admin", enter password "admin", then click on "Apply".

The image shows a Windows desktop environment. In the top-left corner, there is a search window displaying the results for the IP address `\\192.168.1.254`. The search results are empty, with a "See more results" link at the bottom. The taskbar at the bottom shows several open applications: Start, Inbox - Microsoft..., TELUS Customer E..., Advanced Setup - ..., AET, and Presentation1. The "Advanced Setup" application is the primary focus, displaying the TELUS router configuration interface. The interface has a green header with navigation icons for Home, Status, Wireless Setup, Firewall, and Advanced Setup. The main content area is divided into two columns. The left column contains a sidebar menu with categories: Blocking/Filtering (Services Blocking, Website Blocking, Scheduling Access), IP Address (WAN IP Addressing, IPv6 WAN Settings, LAN IP Settings, IPv6 LAN Settings, DHCP Reservation, Dynamic DNS, DNS Host Mapping, Port Bridging), HPNA LAN, Security (Admin Password), Storage Service (Storage Device Info, Samba Configuration), and Modem Utilities (Reboot, Restore Defaults, Check for new firmware link, Speed Test). The right column displays the "Samba Configuration" page, which includes a "File Sharing" section with "Enable" and "Disable" radio buttons (currently "Enable" is selected), and input fields for "Samba Username" (admin), "Samba Password" (masked with dots), "Device Name" (usb1_1), and "Workgroup" (WORKGROUP). A green "Apply" button is located at the bottom of the Samba Configuration section. The TELUS logo and tagline "the future is friendly" are visible in the top-right corner of the router interface.

Click on "Start", type in `\\192.168.1.254` then press "Enter"



Samba Configuration

Enable Disable

Samba Username:

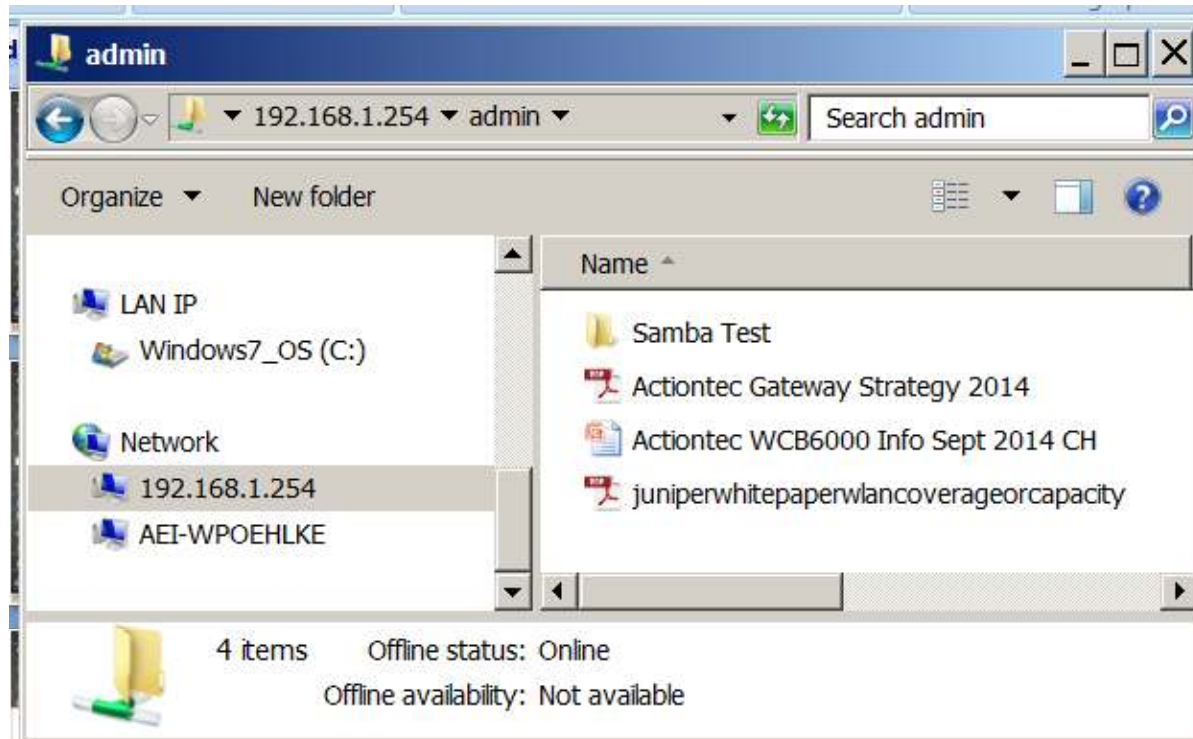
Samba Password:

Device Name:

Workgroup:

- ▶ WAN IP Addressing
 - ▶ IPv6 WAN Settings
 - ▶ LAN IP Settings
 - ▶ IPv6 LAN Settings
 - ▶ **DHCP Reservation**
 - ▶ Dynamic DNS
 - ▶ DNS Host Mapping
 - ▶ Port Bridging
-
- HPNA LAN**
-
- Security**
- ▶ Admin Password
-
- Storage Service**
- ▶ Storage Device Info
 - ▶ **Samba Configuration**
-
- Modem Utilities**
- ▶ Reboot
 - ▶ Restore Defaults

This file/folder box will pop up showing the file name “admin” (“Share” is not actually part of the file name). Double click to open the folder “admin”



You will now see the contents of the folder. Subfolders and files can be now downloaded or uploaded to this location.